



NATA LIGHTING CO.,LTD.
www.nata.cn
Email:info@nata.com
Tel:+86-750-3770000 Fax:+86-750-3771111
Address:380JinOu Road,GaoXin Zone,Jiang Men City,Guangdong,China

NATA

Client:

LumCAT: 1-1375-L

Luminaire: 92.70.410.00

Report No: 2023629-B011

Ballast type: AC

Test No: 2023629-C011

Voltage(V): 34.720

LampCAT: FORTIMO SLM C 1204

Current(A): 0.301

Lamp flux(lm): 1660.3

Power (W): 10.450

Number of Lamps: 1

PF: 0.000

Length(mm): 0

Width(mm): 0

Phm Type: C

Height(mm): 0

Photometric Results

Lumens(lm): 1544.47, Efficiency(%): 93.02% , Luminous Efficacy(lm/W): 147.80

Central intensity(cd): 2787.967, Maximum intensity(cd): 2798.277

Angle of maximum intensity: C=0.0 γ =5.0

Beam Angle(50%Imax): [C0/180]Total=43.4

[C90/270]Total=43.4

Field angle(10%Imax): [C0/180]Total=64.2

[C90/270]Total=64.2

Maximum s/h(1/2): C0_180=0.73 C90_270=0.73

Maximum s/h(1/4): C0_180=0.67 C90_270=0.67

Up flux rate of lamp(%): 0.00%

Down flux rate of lamp(%): 93.02%

Up flux rate of LUM(%): - -

Down flux rate of LUM(%): 100.00%

CIE Type : Direct lighting

Output flux ratio in π solid angle : 97.728%

$\gamma(^{\circ})$	Average I(cd)	Zonal F(lm)	Sum F(lm)	Eff Flux(%)	Eff Sum(%)
0.0	2787.967	0.000	0	0.00%	0.00%
1.0	2789.351	2.669	2.669	0.16%	0.17%
2.0	2791.703	8.010	10.679	0.48%	0.69%
3.0	2795.301	13.362	24.041	0.80%	1.56%
4.0	2796.754	18.718	42.76	1.13%	2.77%
5.0	2798.277	24.070	66.829	1.45%	4.33%
6.0	2797.170	29.406	96.235	1.77%	6.23%
7.0	2788.036	34.667	130.902	2.09%	8.48%
8.0	2768.524	39.767	170.669	2.40%	11.05%
9.0	2744.030	44.676	215.346	2.69%	13.94%
10.0	2711.648	49.372	264.718	2.97%	17.14%
11.0	2667.296	53.747	318.464	3.24%	20.62%
12.0	2610.282	57.691	376.156	3.47%	24.36%
13.0	2538.876	61.108	437.263	3.68%	28.31%
14.0	2452.732	63.892	501.155	3.85%	32.45%
15.0	2355.863	66.015	567.17	3.98%	36.72%
16.0	2239.551	67.336	634.506	4.06%	41.08%
17.0	2117.981	67.858	702.364	4.09%	45.48%
18.0	1982.849	67.614	769.978	4.07%	49.85%
19.0	1852.560	66.728	836.706	4.02%	54.17%
20.0	1702.206	65.062	901.768	3.92%	58.39%
21.0	1518.882	61.851	963.62	3.73%	62.39%
22.0	1349.306	57.637	1021.257	3.47%	66.12%
23.0	1214.064	53.786	1075.044	3.24%	69.61%
24.0	1096.326	50.513	1125.557	3.04%	72.88%
25.0	964.876	46.867	1172.424	2.82%	75.91%
26.0	834.110	42.465	1214.889	2.56%	78.66%
27.0	714.304	37.882	1252.772	2.28%	81.11%
28.0	604.959	33.401	1286.173	2.01%	83.28%
29.0	507.800	29.113	1315.286	1.75%	85.16%
30.0	418.819	25.019	1340.304	1.51%	86.78%
31.0	343.082	21.203	1361.507	1.28%	88.15%
32.0	282.269	17.916	1379.422	1.08%	89.31%
33.0	238.415	15.340	1394.762	0.92%	90.31%
34.0	201.190	13.304	1408.066	0.80%	91.17%
35.0	150.721	10.929	1418.995	0.66%	91.88%
36.0	116.554	8.510	1427.505	0.51%	92.43%
37.0	98.737	7.022	1434.526	0.42%	92.88%

$\gamma(^{\circ})$	Average I(cd)	Zonal F(lm)	Sum F(lm)	Eff Flux(%)	Eff Sum(%)
38.0	87.756	6.225	1440.751	0.37%	93.28%
39.0	78.415	5.672	1446.423	0.34%	93.65%
40.0	71.192	5.218	1451.641	0.31%	93.99%
41.0	64.584	4.835	1456.476	0.29%	94.30%
42.0	59.118	4.494	1460.97	0.27%	94.59%
43.0	53.907	4.187	1465.157	0.25%	94.86%
44.0	49.410	3.899	1469.056	0.23%	95.12%
45.0	45.369	3.642	1472.699	0.22%	95.35%
46.0	41.799	3.409	1476.108	0.21%	95.57%
47.0	38.602	3.198	1479.305	0.19%	95.78%
48.0	35.938	3.013	1482.319	0.18%	95.98%
49.0	33.565	2.854	1485.173	0.17%	96.16%
50.0	31.406	2.709	1487.882	0.16%	96.34%
51.0	29.531	2.578	1490.46	0.16%	96.50%
52.0	27.829	2.461	1492.921	0.15%	96.66%
53.0	26.286	2.354	1495.275	0.14%	96.82%
54.0	24.826	2.253	1497.528	0.14%	96.96%
55.0	23.650	2.164	1499.692	0.13%	97.10%
56.0	22.411	2.081	1501.773	0.13%	97.24%
57.0	21.373	2.002	1503.775	0.12%	97.37%
58.0	20.398	1.932	1505.707	0.12%	97.49%
59.0	19.540	1.867	1507.574	0.11%	97.61%
60.0	18.654	1.804	1509.379	0.11%	97.73%
61.0	17.914	1.745	1511.124	0.11%	97.84%
62.0	17.215	1.693	1512.816	0.10%	97.95%
63.0	16.551	1.642	1514.459	0.10%	98.06%
64.0	15.942	1.594	1516.053	0.10%	98.16%
65.0	15.368	1.549	1517.602	0.09%	98.26%
66.0	14.849	1.508	1519.11	0.09%	98.36%
67.0	14.344	1.468	1520.578	0.09%	98.45%
68.0	13.845	1.428	1522.006	0.09%	98.55%
69.0	13.389	1.389	1523.395	0.08%	98.64%
70.0	12.897	1.350	1524.745	0.08%	98.72%
71.0	12.468	1.311	1526.056	0.08%	98.81%
72.0	12.053	1.275	1527.331	0.08%	98.89%
73.0	11.638	1.239	1528.57	0.07%	98.97%
74.0	11.244	1.203	1529.773	0.07%	99.05%
75.0	10.849	1.167	1530.94	0.07%	99.12%

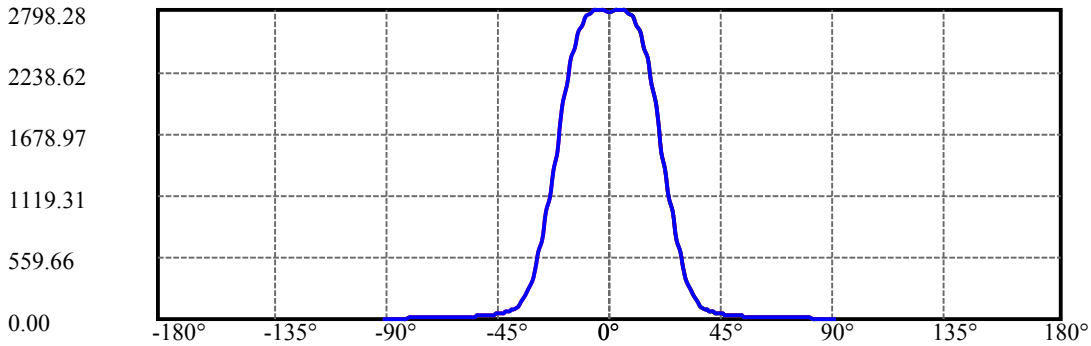
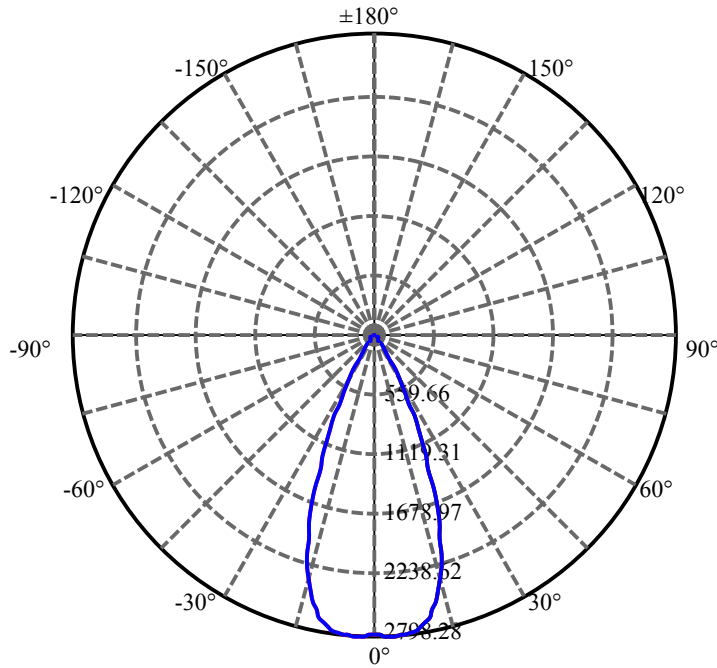
$\gamma(^{\circ})$	Average I(cd)	Zonal F(lm)	Sum F(lm)	Eff Flux(%)	Eff Sum(%)
76.0	10.469	1.132	1532.072	0.07%	99.20%
77.0	10.067	1.095	1533.167	0.07%	99.27%
78.0	9.694	1.058	1534.225	0.06%	99.34%
79.0	9.306	1.021	1535.246	0.06%	99.40%
80.0	8.953	0.984	1536.23	0.06%	99.47%
81.0	8.601	0.949	1537.179	0.06%	99.53%
82.0	8.262	0.914	1538.094	0.06%	99.59%
83.0	7.964	0.882	1538.976	0.05%	99.64%
84.0	7.694	0.853	1539.829	0.05%	99.70%
85.0	7.452	0.827	1540.655	0.05%	99.75%
86.0	7.231	0.803	1541.458	0.05%	99.81%
87.0	7.023	0.780	1542.238	0.05%	99.86%
88.0	6.836	0.759	1542.997	0.05%	99.90%
89.0	6.684	0.741	1543.738	0.04%	99.95%
90.0	6.594	0.728	1544.466	0.04%	100.00%

ZONAL LUMEN SUMMARY

Zone	Lumens	%Lamp	%Fixt
0-30	1340.30	80.73%	86.78%
0-40	1451.64	87.43%	93.99%
0-60	1509.38	90.91%	97.73%
0-90	1543.74	92.98%	99.95%
0-120	1543.74	92.98%	99.95%
0-180	1544.47	93.02%	100.00%
60-90	34.36	2.07%	2.22%
90-120	0.00	0.00%	0.00%
90-130	0.00	0.00%	0.00%
90-150	0.00	0.00%	0.00%
90-180	0.00	0.00%	0.00%
0-26.55	1235.57	74.42%	80.00%

ZONAL LUMEN SUMMARY

0-10	264.72
10-20	637.05
20-30	438.54
30-40	111.34
40-50	36.24
50-60	21.50
60-70	15.37
70-80	11.48
80-90	7.51
90-100	0.00
100-110	0.00
110-120	0.00
120-130	0.00
130-140	0.00
140-150	0.00
150-160	0.00
160-170	0.00
170-180	0.00



C0(Max): —————

C0/C180: —————

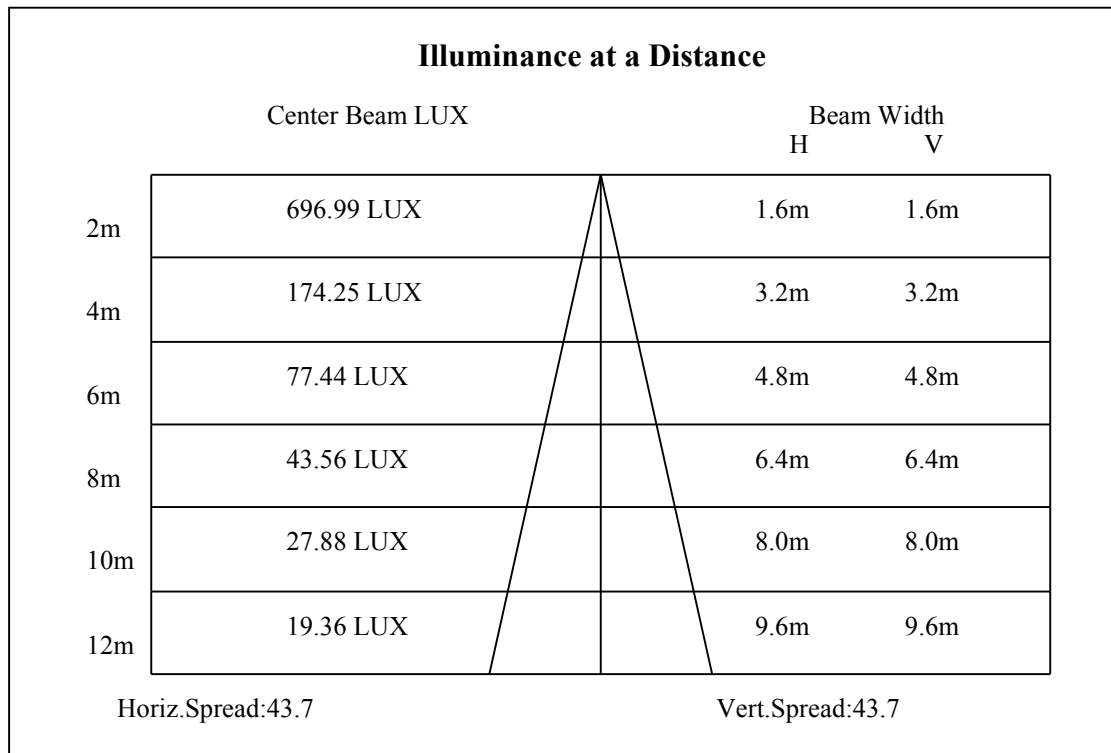
C90/C270: —————

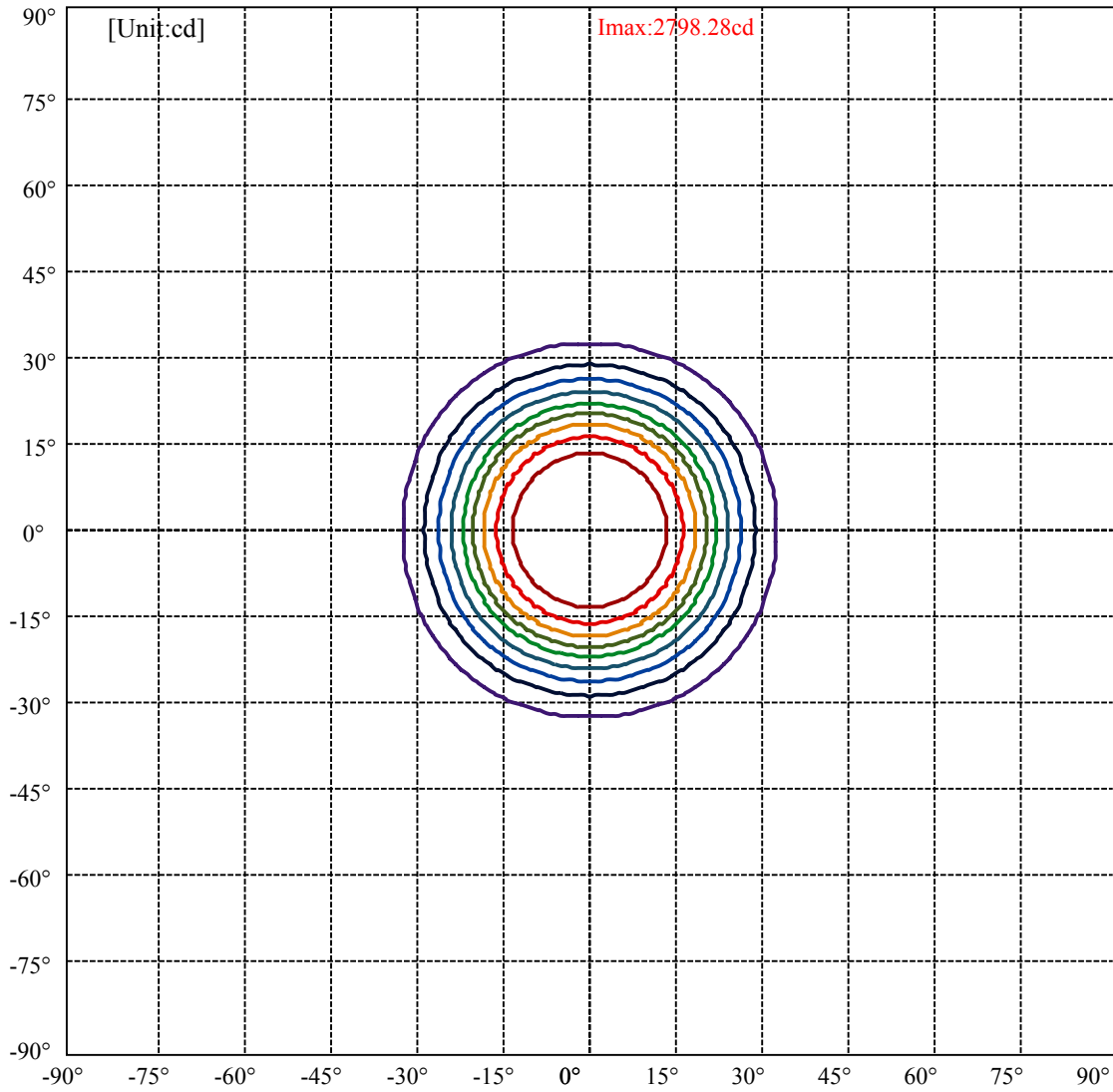
Field angle(10%Imax):C0/180Left:32.1 Right:32.1

:C90/270Left:32.1 Right:32.1

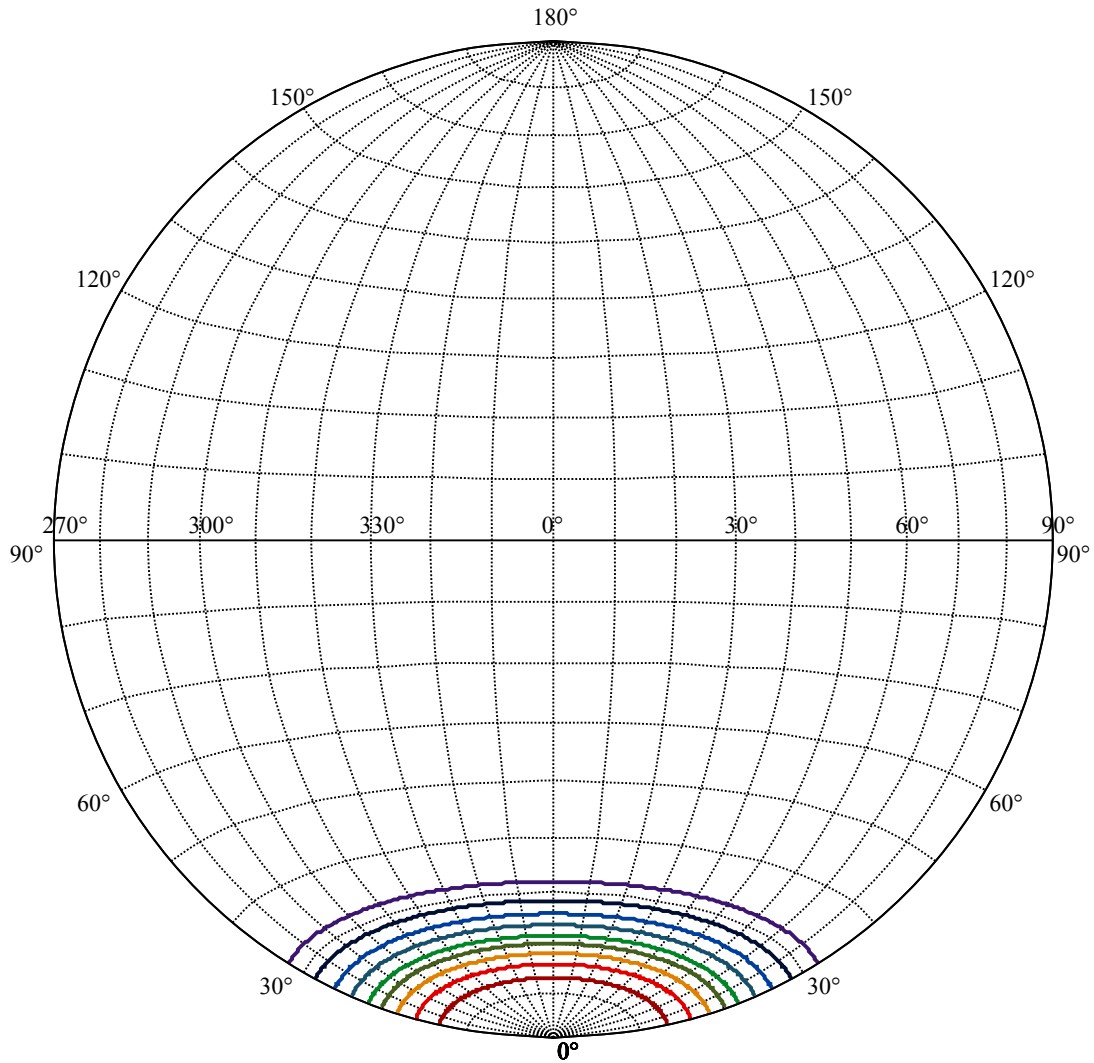
Beam Angle(50%Imax):C0/180Left:21.7 Right:21.7

:C90/270Left:21.7 Right:21.7





(10%Imax) 279.828	—
(20%Imax) 559.655	—
(30%Imax) 839.483	—
(40%Imax) 1119.31	—
(50%Imax) 1399.14	—
(60%Imax) 1678.97	—
(70%Imax) 1958.79	—
(80%Imax) 2238.62	—
(90%Imax) 2518.45	—



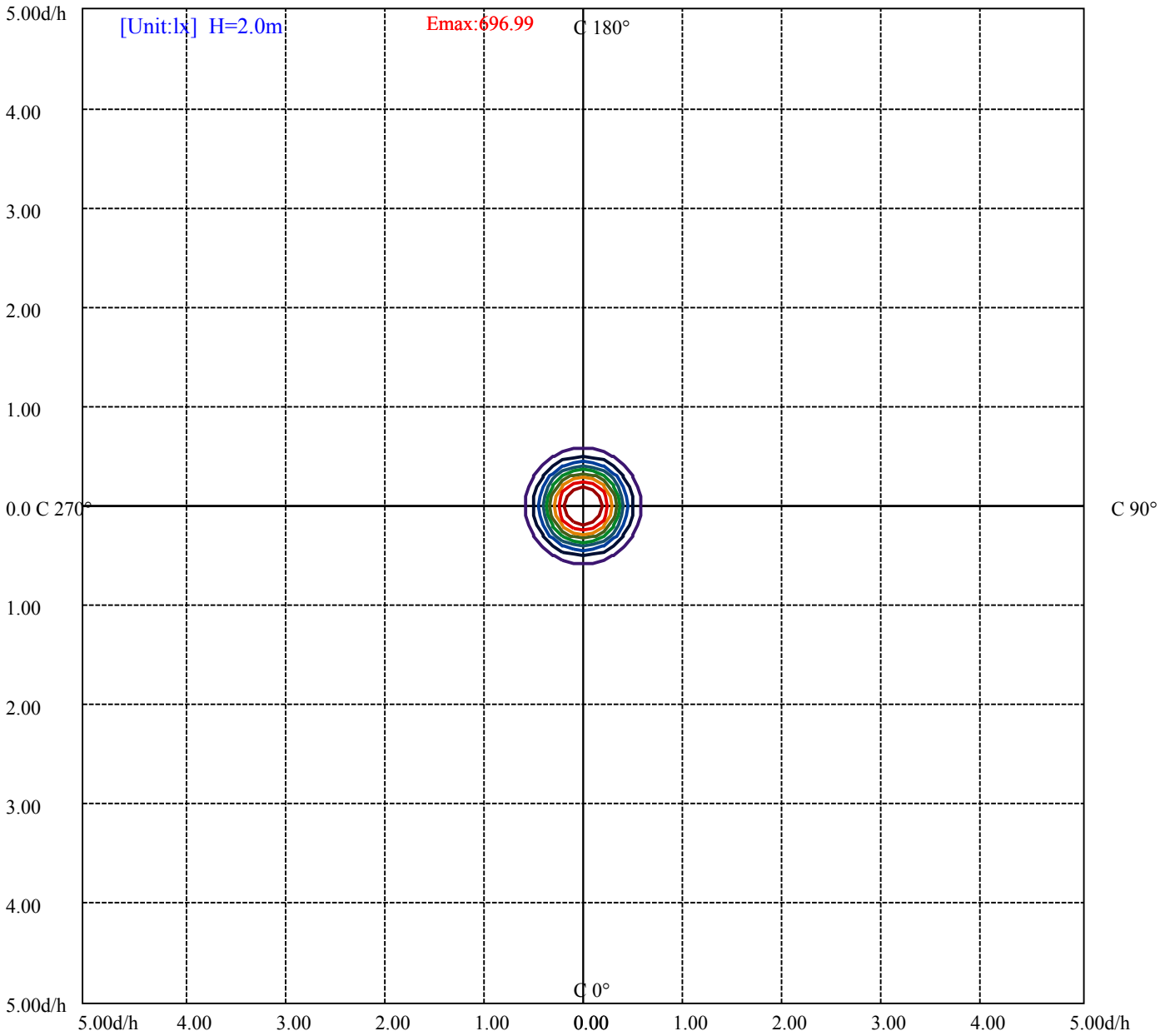
House

[Unit:cd]

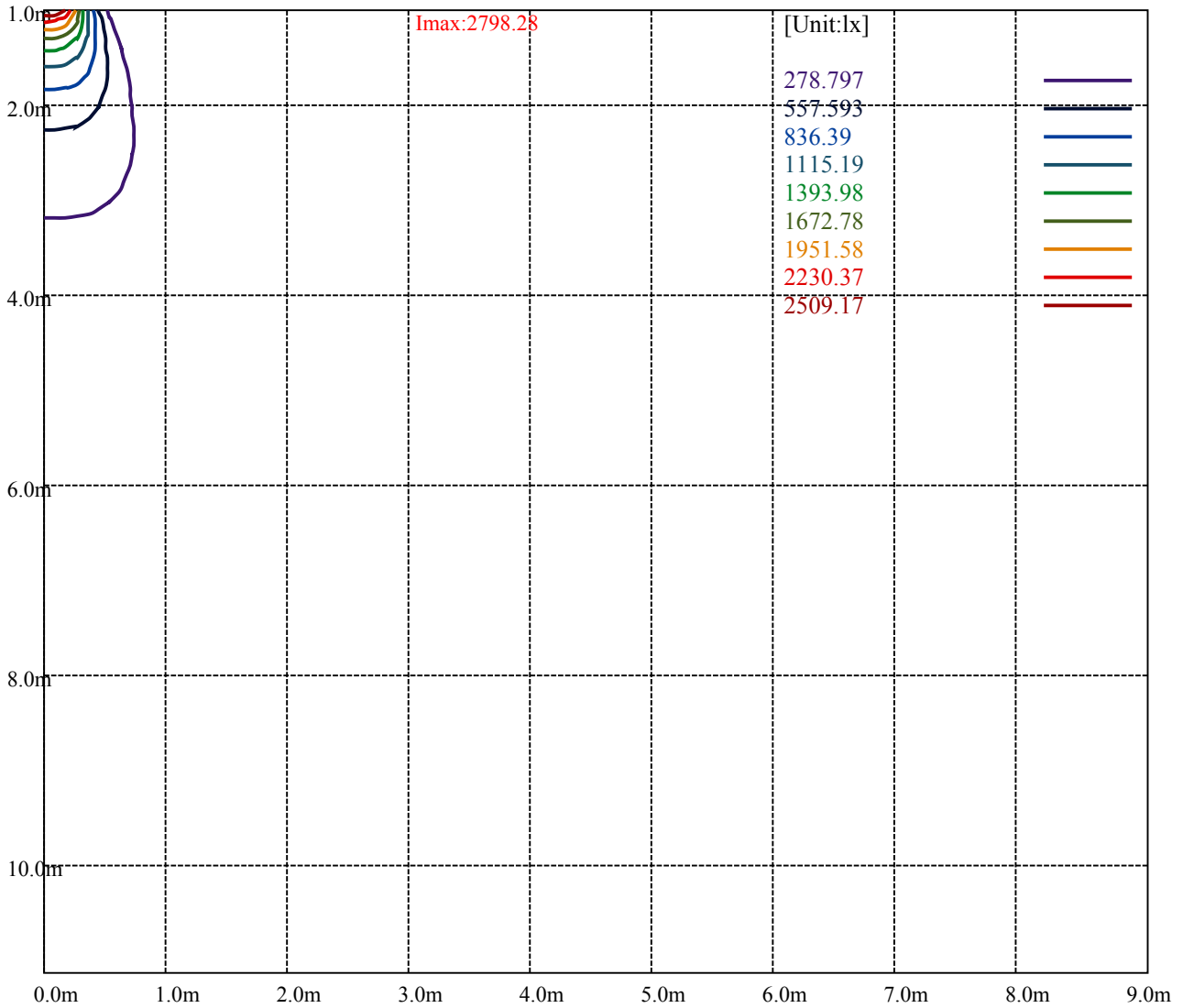
Road

Imax:2798.28

(10%Imax) 279.828	—
(20%Imax) 559.655	—
(30%Imax) 839.483	—
(40%Imax) 1119.31	—
(50%Imax) 1399.14	—
(60%Imax) 1678.97	—
(70%Imax) 1958.79	—
(80%Imax) 2238.62	—
(90%Imax) 2518.45	—



- (10%Emax) 69.69925 ———
- (20%Emax) 139.3983 ———
- (30%Emax) 209.0975 ———
- (40%Emax) 278.7975 ———
- (50%Emax) 348.495 ———
- (60%Emax) 418.195 ———
- (70%Emax) 487.895 ———
- (80%Emax) 557.5925 ———
- (90%Emax) 627.2925 ———



Luminance Table

γ	45	50	55	60	65	70	75	80	85
C0	0	0	0	0	0	0	0	0	0
C45	0	0	0	0	0	0	0	0	0
C90	0	0	0	0	0	0	0	0	0

L(Hor)(65)	L(Ver)(65)	L45(65)	L(Hor)(75)	L(Ver)(75)	L45(75)	L(Hor)(85)	L(Ver)(85)	L45(85)
0	0	0	0	0	0	0	0	0

Glare Table

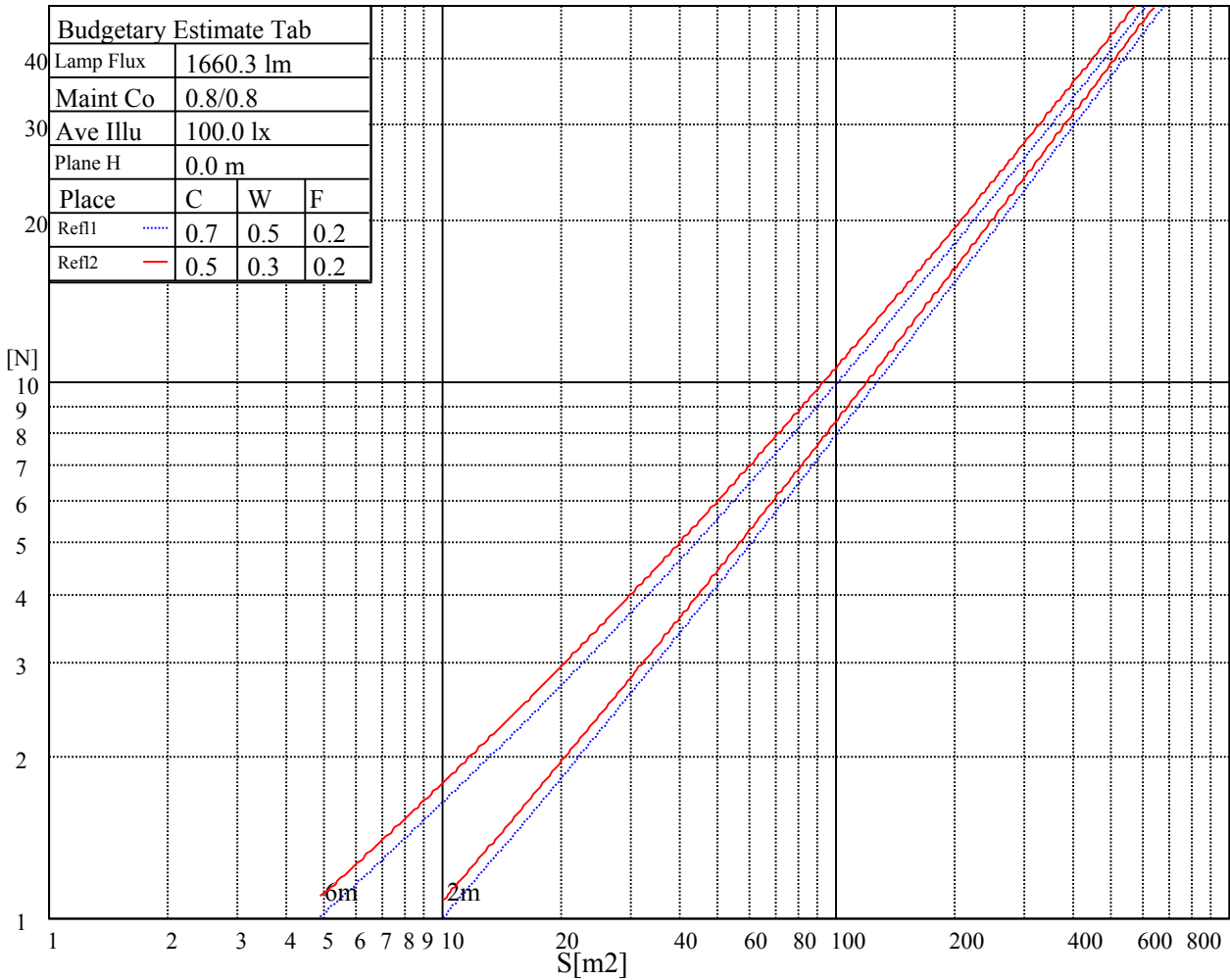
Glare	Quality	Service Values Illuminance(lx)							
1.15	A	2000	1000	500	<=300				
1.5	B		2000	1000	500	<=300			
1.85	C			2000	1000	500	<=300		
2.2	D				2000	1000	500	<=300	
2.55	E					2000	1000	500	<=300
		a	b	c	d	e	f	g	h

Luminance Limiting Curve

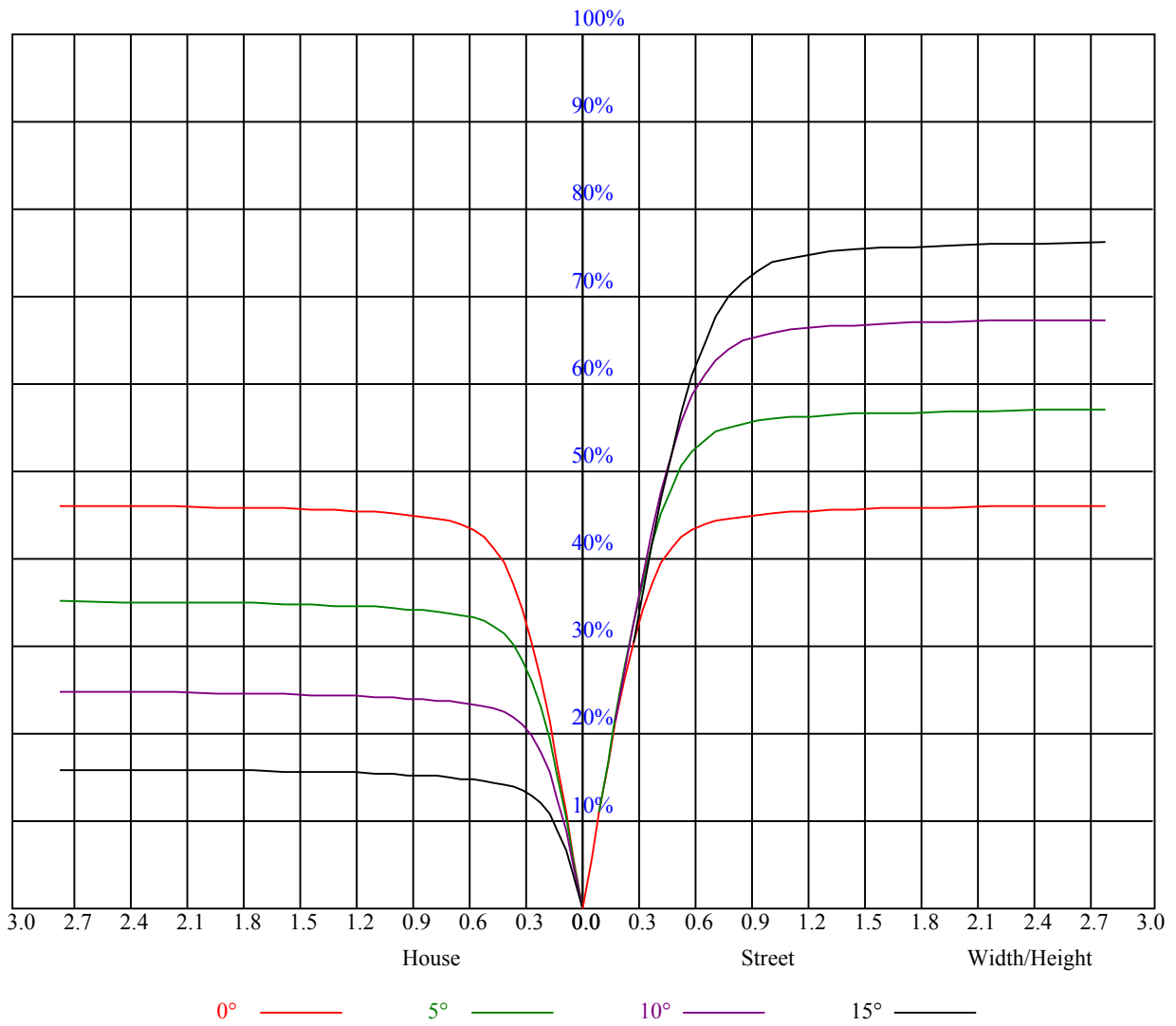


Illumination assessment according UGR											
Rf of Ceiling	70	70	50	50	30	70	70	50	50	30	
Rf of Wall	50	30	50	30	30	50	30	50	30	30	
Rf of Floor	20	20	20	20	20	20	20	20	20	20	
Room dimensions		Viewed crosswise					Viewed endwise				
X	Y										
2H	2H	非数字	非数字	非数字	非数字	非数字	非数字	非数字	非数字	非数字	
	3H	非数字	非数字	非数字	非数字	非数字	非数字	非数字	非数字	非数字	
	4H	非数字	非数字	非数字	非数字	非数字	非数字	非数字	非数字	非数字	
	6H	非数字	非数字	非数字	非数字	非数字	非数字	非数字	非数字	非数字	
	8H	非数字	非数字	非数字	非数字	非数字	非数字	非数字	非数字	非数字	
	12H	非数字	非数字	非数字	非数字	非数字	非数字	非数字	非数字	非数字	
4H	2H	非数字	非数字	非数字	非数字	非数字	非数字	非数字	非数字	非数字	
	3H	非数字	非数字	非数字	非数字	非数字	非数字	非数字	非数字	非数字	
	4H	非数字	非数字	非数字	非数字	非数字	非数字	非数字	非数字	非数字	
	6H	非数字	非数字	非数字	非数字	非数字	非数字	非数字	非数字	非数字	
	8H	非数字	非数字	非数字	非数字	非数字	非数字	非数字	非数字	非数字	
8H	12H	非数字	非数字	非数字	非数字	非数字	非数字	非数字	非数字	非数字	
	4H	非数字	非数字	非数字	非数字	非数字	非数字	非数字	非数字	非数字	
	6H	非数字	非数字	非数字	非数字	非数字	非数字	非数字	非数字	非数字	
	8H	非数字	非数字	非数字	非数字	非数字	非数字	非数字	非数字	非数字	
12H	12H	非数字	非数字	非数字	非数字	非数字	非数字	非数字	非数字	非数字	
	4H	非数字	非数字	非数字	非数字	非数字	非数字	非数字	非数字	非数字	
	6H	非数字	非数字	非数字	非数字	非数字	非数字	非数字	非数字	非数字	
	8H	非数字	非数字	非数字	非数字	非数字	非数字	非数字	非数字	非数字	
Variation with the observer position at spacings:											
S = 1.0H		非数字/非数字					非数字/非数字				
S = 1.5H		非数字/非数字					非数字/非数字				
S = 2.0H		非数字/非数字					非数字/非数字				
Standard tables:		BK0					BK0				
Uncorrected UGR		负无穷大					负无穷大				

UGR calculation is based on CIE Publ. 117 ,S/H = 0.25



RHOCC	80			70			50			30			10			0
RHOW	50	30	10	50	30	10	50	30	10	50	30	10	50	30	10	0
RCR	COEFFICIENTS OF UTILIZATION RHOF=20 CU															
0	1.11	1.11	1.11	1.08	1.08	1.08	1.03	1.03	1.03	0.99	0.99	0.99	0.95	0.95	0.95	0.93
1	1.03	1.01	0.99	1.01	0.99	0.98	0.98	0.96	0.95	0.94	0.93	0.92	0.91	0.90	0.89	0.88
2	0.97	0.94	0.91	0.95	0.92	0.90	0.93	0.90	0.88	0.90	0.88	0.86	0.87	0.86	0.84	0.83
3	0.92	0.87	0.84	0.90	0.86	0.83	0.88	0.85	0.82	0.86	0.83	0.81	0.84	0.81	0.80	0.78
4	0.87	0.82	0.79	0.86	0.81	0.78	0.84	0.80	0.77	0.82	0.79	0.76	0.80	0.78	0.75	0.74
5	0.82	0.77	0.74	0.81	0.77	0.74	0.80	0.76	0.73	0.78	0.75	0.72	0.77	0.74	0.72	0.70
6	0.78	0.73	0.70	0.78	0.73	0.70	0.76	0.72	0.69	0.75	0.71	0.69	0.74	0.71	0.68	0.67
7	0.75	0.70	0.66	0.74	0.69	0.66	0.73	0.69	0.66	0.72	0.68	0.65	0.71	0.68	0.65	0.64
8	0.71	0.66	0.63	0.71	0.66	0.63	0.70	0.66	0.63	0.69	0.65	0.63	0.68	0.65	0.62	0.61
9	0.68	0.63	0.60	0.68	0.63	0.60	0.67	0.63	0.60	0.66	0.62	0.60	0.66	0.62	0.60	0.59
10	0.65	0.61	0.58	0.65	0.61	0.58	0.64	0.60	0.57	0.64	0.60	0.57	0.63	0.60	0.57	0.56



Intensity data(cd)

C/γ(°)	0.0	1.0	2.0	3.0	4.0	5.0	6.0	7.0	8.0
0.0	2791.98	2801.94	2809.69	2813.57	2819.10	2818.55	2808.59	2786.44	2753.23
45.0	2792.53	2787.55	2788.11	2791.98	2787.00	2785.34	2780.36	2769.84	2737.73
90.0	2777.59	2774.27	2769.84	2768.73	2764.86	2751.57	2742.16	2722.79	2689.58
135.0	2789.77	2777.59	2772.61	2769.29	2770.95	2773.71	2768.73	2756.00	2737.73
180.0	2791.98	2787.00	2783.68	2785.34	2782.02	2784.78	2791.43	2791.98	2784.78
225.0	2792.53	2794.19	2796.41	2806.37	2808.03	2809.14	2810.80	2803.60	2792.53
270.0	2777.59	2793.64	2803.05	2804.16	2813.57	2830.17	2836.26	2840.69	2836.26
315.0	2789.77	2798.62	2810.25	2822.98	2828.51	2832.94	2839.03	2832.94	2816.34
360.0	2791.98	2801.94	2809.69	2813.57	2819.10	2818.55	2808.59	2786.44	2753.23

C/γ(°)	9.0	10.0	11.0	12.0	13.0	14.0	15.0	16.0	17.0
0.0	2727.22	2681.83	2604.89	2528.50	2415.58	2309.30	2191.95	2066.29	1906.88
45.0	2706.18	2677.95	2638.10	2555.62	2488.09	2408.38	2280.51	2164.27	2046.37
90.0	2654.70	2597.14	2542.89	2475.36	2396.20	2278.30	2164.82	2049.69	1936.21
135.0	2716.70	2688.47	2657.47	2597.14	2534.03	2463.73	2381.26	2253.94	2138.25
180.0	2775.93	2753.23	2728.32	2702.86	2651.94	2579.98	2515.21	2437.16	2314.28
225.0	2764.30	2736.07	2694.00	2645.29	2574.99	2503.59	2419.45	2294.35	2184.75
270.0	2816.89	2798.07	2768.18	2728.88	2665.77	2602.67	2524.07	2400.63	2287.71
315.0	2790.32	2760.43	2704.52	2648.61	2584.40	2475.91	2369.63	2250.07	2129.40
360.0	2727.22	2681.83	2604.89	2528.50	2415.58	2309.30	2191.95	2066.29	1906.88

C/γ(°)	18.0	19.0	20.0	21.0	22.0	23.0	24.0	25.0	26.0
0.0	1774.58	1634.54	1485.08	1079.06	1079.06	1011.42	883.39	741.30	637.01
45.0	1901.34	1770.71	1611.29	1475.12	1339.50	1200.56	1033.40	910.51	793.16
90.0	1781.22	1659.45	1497.26	1260.35	1092.07	1092.07	938.74	826.82	720.87
135.0	2024.78	1880.86	1759.08	1625.68	1451.32	1311.27	1172.89	1006.83	883.39
180.0	2206.34	2091.76	1941.20	1821.63	1683.80	1502.79	1368.84	1216.06	1052.22
225.0	2038.62	1913.52	1779.01	1640.07	1494.49	1095.17	1095.17	1026.81	868.66
270.0	2173.13	2043.05	1867.58	1726.98	1578.63	1423.64	1238.76	1083.21	957.56
315.0	1962.78	1826.61	1677.16	1522.17	1075.58	1075.58	1039.43	907.47	760.00
360.0	1774.58	1634.54	1485.08	1079.06	1079.06	1011.42	883.39	741.30	637.01

C/γ(°)	27.0	28.0	29.0	30.0	31.0	32.0	33.0	34.0	35.0
0.0	539.81	435.41	360.85	280.37	226.51	181.39	138.77	114.86	99.25
45.0	684.12	564.00	479.31	402.37	332.62	285.57	285.57	162.19	128.25
90.0	595.22	508.42	427.05	354.54	273.83	220.14	175.75	140.99	112.04
135.0	766.04	636.51	542.96	459.38	382.44	313.80	282.25	282.25	150.23
180.0	920.48	800.91	689.10	562.89	473.77	392.40	322.10	288.89	288.89
225.0	753.14	646.86	549.22	440.50	364.61	297.64	228.61	184.71	143.64
270.0	802.57	690.20	564.00	475.99	396.83	328.75	283.36	283.36	164.40
315.0	653.06	557.36	449.91	374.52	294.04	238.46	190.91	152.28	119.07
360.0	539.81	435.41	360.85	280.37	226.51	181.39	138.77	114.86	99.25

C/γ(°)	36.0	37.0	38.0	39.0	40.0	41.0	42.0	43.0	44.0
0.0	89.17	78.88	71.74	65.82	60.72	54.97	50.81	47.05	43.56
45.0	109.43	94.82	85.52	77.38	70.63	63.60	58.67	54.08	50.04
90.0	97.70	87.24	76.06	68.92	61.50	56.46	51.87	47.83	43.18
135.0	123.72	102.90	92.16	81.09	73.51	67.09	60.28	55.41	50.93
180.0	156.43	123.88	107.39	93.88	84.80	76.78	69.86	62.66	57.40
225.0	119.90	102.57	90.56	79.60	71.79	65.10	59.45	52.97	48.49
270.0	134.73	109.60	96.98	88.29	80.48	71.96	66.15	60.78	54.97
315.0	101.35	90.00	81.65	72.35	66.09	60.72	55.85	50.48	46.72
360.0	89.17	78.88	71.74	65.82	60.72	54.97	50.81	47.05	43.56

Intensity data(cd)

C/γ(°)	45.0	46.0	47.0	48.0	49.0	50.0	51.0	52.0	53.0
0.0	39.74	37.14	34.37	32.38	30.56	28.56	27.12	25.79	24.58
45.0	45.56	42.23	39.36	36.92	34.15	32.11	29.95	28.40	26.96
90.0	39.91	37.03	34.49	31.94	30.00	28.29	26.85	25.13	23.91
135.0	47.05	42.68	39.47	36.81	34.49	31.94	30.11	28.51	26.74
180.0	52.86	48.66	44.06	40.74	37.92	35.43	32.77	30.89	29.12
225.0	44.62	41.18	37.36	34.76	32.49	30.06	28.29	26.29	24.91
270.0	50.76	46.05	42.84	39.91	36.81	34.54	32.55	30.83	28.67
315.0	42.46	39.41	36.87	34.04	32.11	30.33	28.62	26.79	25.41
360.0	39.74	37.14	34.37	32.38	30.56	28.56	27.12	25.79	24.58
C/γ(°)	54.0	55.0	56.0	57.0	58.0	59.0	60.0	61.0	62.0
0.0	23.19	22.14	21.20	20.26	19.26	18.49	17.77	16.94	16.38
45.0	25.35	24.13	23.03	21.98	20.81	19.98	19.10	18.38	17.49
90.0	22.53	21.53	20.54	19.48	18.71	18.05	17.16	16.55	16.00
135.0	25.35	24.24	22.81	21.81	20.76	19.87	18.99	18.32	17.49
180.0	27.18	25.74	24.13	23.03	21.98	21.03	19.93	19.15	18.38
225.0	23.69	22.53	21.26	20.37	19.54	18.76	17.88	17.21	16.61
270.0	27.12	25.79	24.52	23.14	22.09	21.09	20.09	19.26	18.54
315.0	24.19	23.08	21.81	20.92	20.04	19.04	18.32	17.49	16.83
360.0	23.19	22.14	21.20	20.26	19.26	18.49	17.77	16.94	16.38
C/γ(°)	63.0	64.0	65.0	66.0	67.0	68.0	69.0	70.0	71.0
0.0	15.83	15.22	14.72	14.23	13.67	13.23	12.79	12.40	11.90
45.0	16.83	16.27	15.61	15.11	14.61	13.95	13.51	12.95	12.57
90.0	15.44	14.83	14.34	13.89	13.45	12.95	12.51	12.07	11.68
135.0	16.88	16.33	15.78	15.17	14.67	14.23	13.78	13.23	12.79
180.0	17.55	16.94	16.33	15.78	15.17	14.72	14.28	13.73	13.28
225.0	15.94	15.39	14.78	14.39	13.95	13.51	13.01	12.62	12.23
270.0	17.66	16.99	16.38	15.67	15.17	14.67	14.17	13.56	13.06
315.0	16.27	15.55	15.00	14.56	14.06	13.51	13.06	12.62	12.23
360.0	15.83	15.22	14.72	14.23	13.67	13.23	12.79	12.40	11.90
C/γ(°)	72.0	73.0	74.0	75.0	76.0	77.0	78.0	79.0	80.0
0.0	11.51	11.18	10.79	10.35	9.96	9.47	9.13	8.75	8.41
45.0	12.12	11.73	11.24	10.90	10.52	10.19	9.74	9.35	9.02
90.0	11.35	10.90	10.57	10.24	9.91	9.52	9.19	8.80	8.52
135.0	12.29	11.90	11.51	11.07	10.74	10.41	10.02	9.63	9.24
180.0	12.73	12.34	12.01	11.62	11.13	10.74	10.41	10.02	9.58
225.0	11.85	11.40	11.07	10.68	10.35	9.91	9.58	9.19	8.86
270.0	12.68	12.23	11.73	11.35	10.96	10.46	10.07	9.69	9.30
315.0	11.90	11.40	11.02	10.57	10.19	9.85	9.41	9.02	8.69
360.0	11.51	11.18	10.79	10.35	9.96	9.47	9.13	8.75	8.41
C/γ(°)	81.0	82.0	83.0	84.0	85.0	86.0	87.0	88.0	89.0
0.0	8.14	7.80	7.58	7.36	7.14	6.92	6.75	6.59	6.59
45.0	8.69	8.36	7.92	7.64	7.47	7.20	7.03	6.81	6.64
90.0	8.14	7.86	7.64	7.42	7.20	6.97	6.86	6.70	6.53
135.0	8.86	8.47	8.14	7.80	7.58	7.36	7.14	6.92	6.75
180.0	9.19	8.80	8.47	8.14	7.86	7.58	7.42	7.14	6.97
225.0	8.52	8.19	7.92	7.69	7.42	7.25	6.97	6.86	6.70
270.0	8.97	8.52	8.25	7.97	7.64	7.47	7.14	6.97	6.75
315.0	8.30	8.08	7.80	7.53	7.31	7.09	6.86	6.70	6.53
360.0	8.14	7.80	7.58	7.36	7.14	6.92	6.75	6.59	6.59

Intensity data(cd)

C/γ(°)	90.0
0.0	6.64
45.0	6.59
90.0	6.53
135.0	6.59
180.0	6.75
225.0	6.53
270.0	6.59
315.0	6.53
360.0	6.64